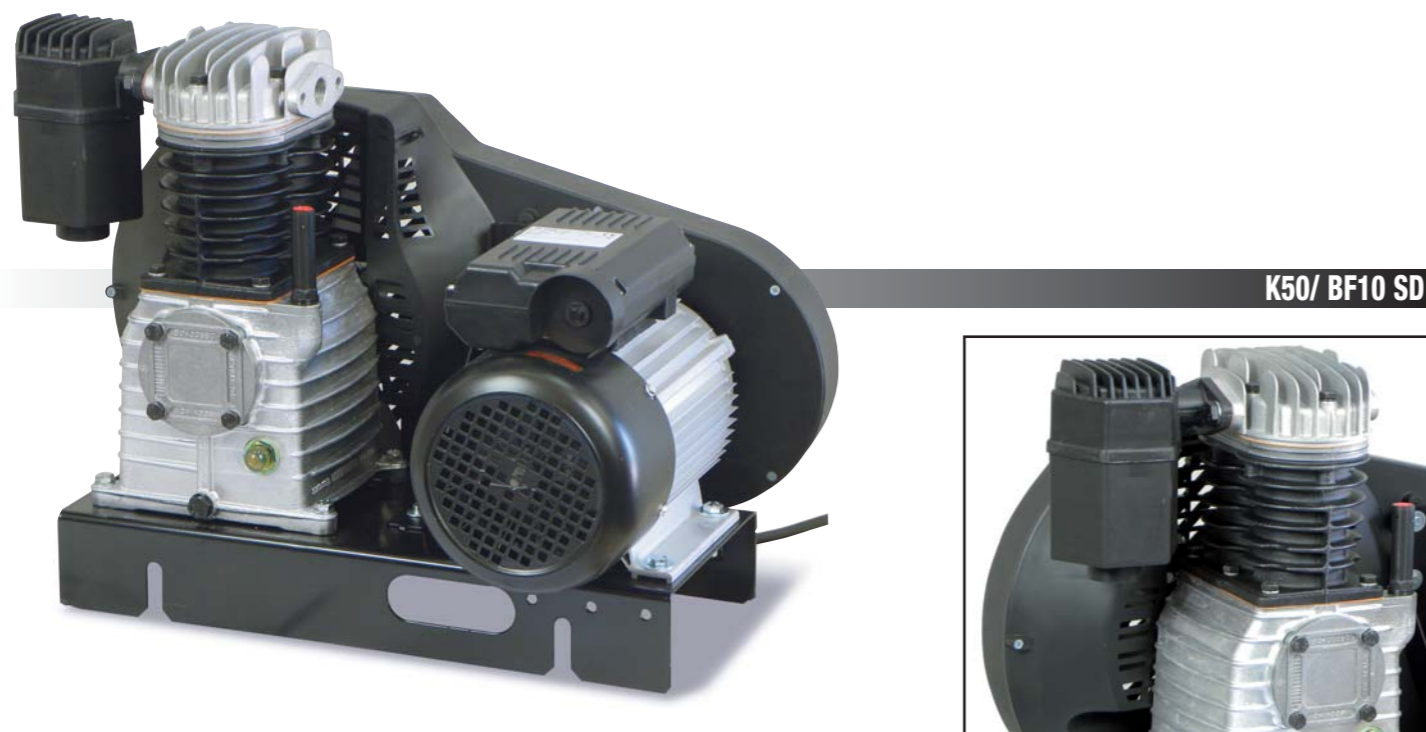


Professional line

Basi per serbatoio Saddle mounted compressors

Comprendono gruppo motore, cinghia, protezione cinghia, puleggia e base. Sono basi premontate a disposizione di quei clienti che, per eseguire applicazioni speciali o per problemi di trasporto, richiedono solo il gruppo motore-pompa.

Which include a motor unit, belt, belt protection, pulley and base. These are preassembled bases available to customers who only require a motor/pump unit in order to perform special applications or due to transportation problems.



K50/ BF10 SD

Prestazioni Performance													
Nome Name	Codice Code	Gruppo Pump	Serbatoio Tank	Potenza Power	Cilindri Cylinder	Press. Max Max press.	Lubrificato Lubricated	N° Giri RPM	Aria Aspirata Air Displacement	Tensione Frequenza Voltage Frequency	Peso Weight	Dimensioni Dimensions	Codice a barre Ean code
			Lt	Hp/kW	n.	bar/PSI			l/min./CFM	Volt/Hz	kg/lbs	LxPxA / WxDxH	
K8/BS M2	SBJN404SHA	K8	0	2/1,5	1	10/145	YES	1400	207/7,3	230/50	23/50,6	570x330x420	8028403011579
K8/BS T2	SBJN441SHA	K8	0	2/1,5	1	10/145	YES	1400	207/7,3	400/50	23/50,6	570x330x420	8028403011081
K11/BS M2	SCJN404SHA	K11	0	2/1,5	2	10/145	YES	1180	260/9,2	230/50	25/55	570x330x420	8028403011098
K11/BS T2	SCJN441SHA	K11	0	2/1,5	2	10/145	YES	1180	260/9,2	400/50	25/55	570x330x420	8028403011104
K11C/BS M3	SCJN504SHA	K11C	0	3/2,2	2	10/145	YES	1500	332/11,7	230/50	26/57,2	570x330x400	8028403011111
K11C/BS T3	SCJN541SHA	K11C	0	3/2,2	2	10/145	YES	1500	332/11,7	400/50	26/57,2	570x330x400	8028403011128
K17C/BS M3	SZJN504SHA	K17C	0	3/2,2	2	10/145	YES	1450	465/16,3	230/50	28/61,6	570x350x450	8028403011135
K17C/BS T3	SZJN541SHA	K17C	0	3/2,2	2	10/145	YES	1450	465/16,3	400/50	28/61,6	570x330x400	8028403011142
K18C/BS T4	SEJN601SHA	K18C	0	4/3,0	2	10/145	YES	1400	539/19	400/50	49/107,8	700x400x500	8028403011630
K28/BS T5,5	SHJN701SHA	K28	0	5,5/4,0	2	11/160	YES	1290	662/23,4	400/50	53/116,6	700x400x500	8028403011159
K30/BS T7,5	SLJN801SHA	K30	0	7,5/5,5	2	11/160	YES	1200	872/31	400/50	67/147,4	700x420x600	8028403011166
K50/BS T10	SMJN901SHA	K50	0	10/7,5	2	11/160	YES	1000	1074/38	400/50	110/242	1000x500x700	8028403011173

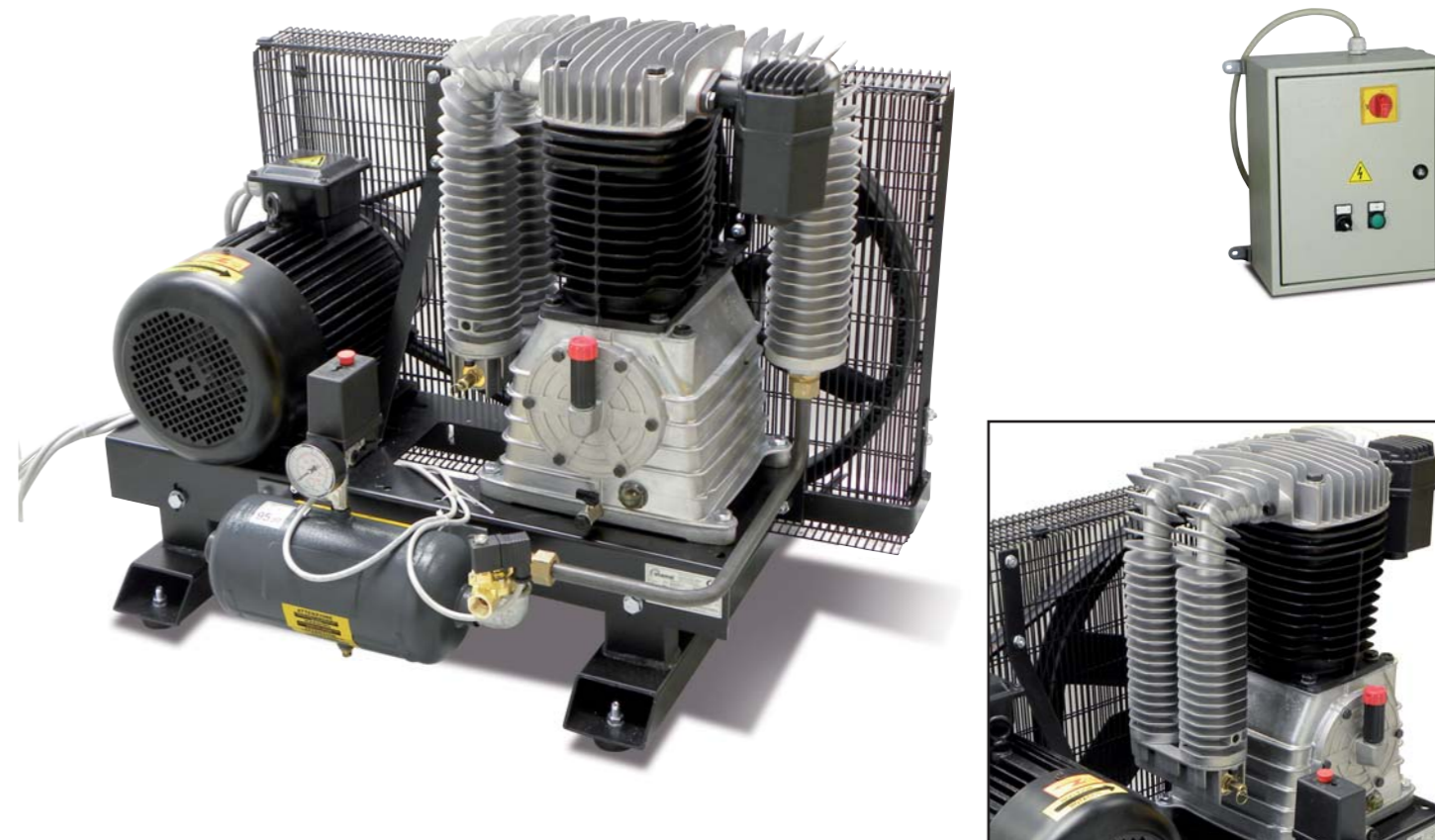


Professional line

Basi fisse Base plate compressors

Compatte stazioni per la produzione dell'aria compressa, interamente equipaggiate e totalmente indipendenti. Queste macchine consentono di comporre impianti modulari e su richiesta possono essere dotati di centralina di avviamento.

Compact compressed air stations which are fully equipped and totally independent. These machines allow you to compose modular systems and they can also be equipped with start-up controls upon request.



SD = Avviatore stella triangolo/Star delta starter

Prestazioni Performance													
Nome Name	Codice Code	Gruppo Pump	Serbatoio Tank	Potenza Power	Cilindri Cylinder	Press. Max Max press.	Lubrificato Lubricated	N° Giri RPM	Aria Aspirata Air Displacement	Tensione Frequenza Voltage Frequency	Peso Weight	Dimensioni Dimensions	Codice a barre Ean code
			Lt	Hp/kW	n.	bar/PSI			l/min./CFM	Volt/Hz	kg/lbs	LxPxA / WxDxH	
K28/ BF5,5	SHYN701SHA	K28	3	5,5/4,0	2	11/160	YES	1290	662/23,4	400/50	75/165	850x500x900	8028403010992
K30/ BF7,5	SLYN801SHA	K30	3	7,5/5,5	2	11/160	YES	1200	872/31	400/50	92/202,4	850x500x900	8028403011005
K30/ BF7,5 SD	SLYN805SHA	K30	3	7,5/5,5	2	11/160	YES	1200	872/31	400/50	92/202,4	850x500x900	8028403011012
K50/ BF10	SMYN901SHA	K50	3	10/7,5	2	11/160	YES	1000	1074/38	400/50	140/308	1100x650x1000	8028403011029
K50/ BF10 SD	SMYN905SHA	K50	3	10/7,5	2	11/160	YES	1000	1074/38	400/50	140/308	1100x650x1000	8028403011036
K60/ BF15	SNYNA01SHA	K60	3	15/11	4V	11/160	YES	1200	1745/61,5	400/50	160/352	1200x700x1200	8028403011043
K60/ BF15 SD	SNYNA05SHA	K60	3	15/11	4V	11/160	YES	1200	1745/61,5	400/50	160/352	1200x700x1200	8028403011050
K100/ BF20	SPYNB01SHA	K100	3	20/15	4V	11/160	YES	1000	2148/76	400/50	256/563,2	1200x700x1200	8028403011067
K100/ BF20 SD	SPYNB05SHA	K100	3	20/15	4V	11/160	YES	1000	2148/76	400/50	256/563,2	1200x700x1200	8028403011074